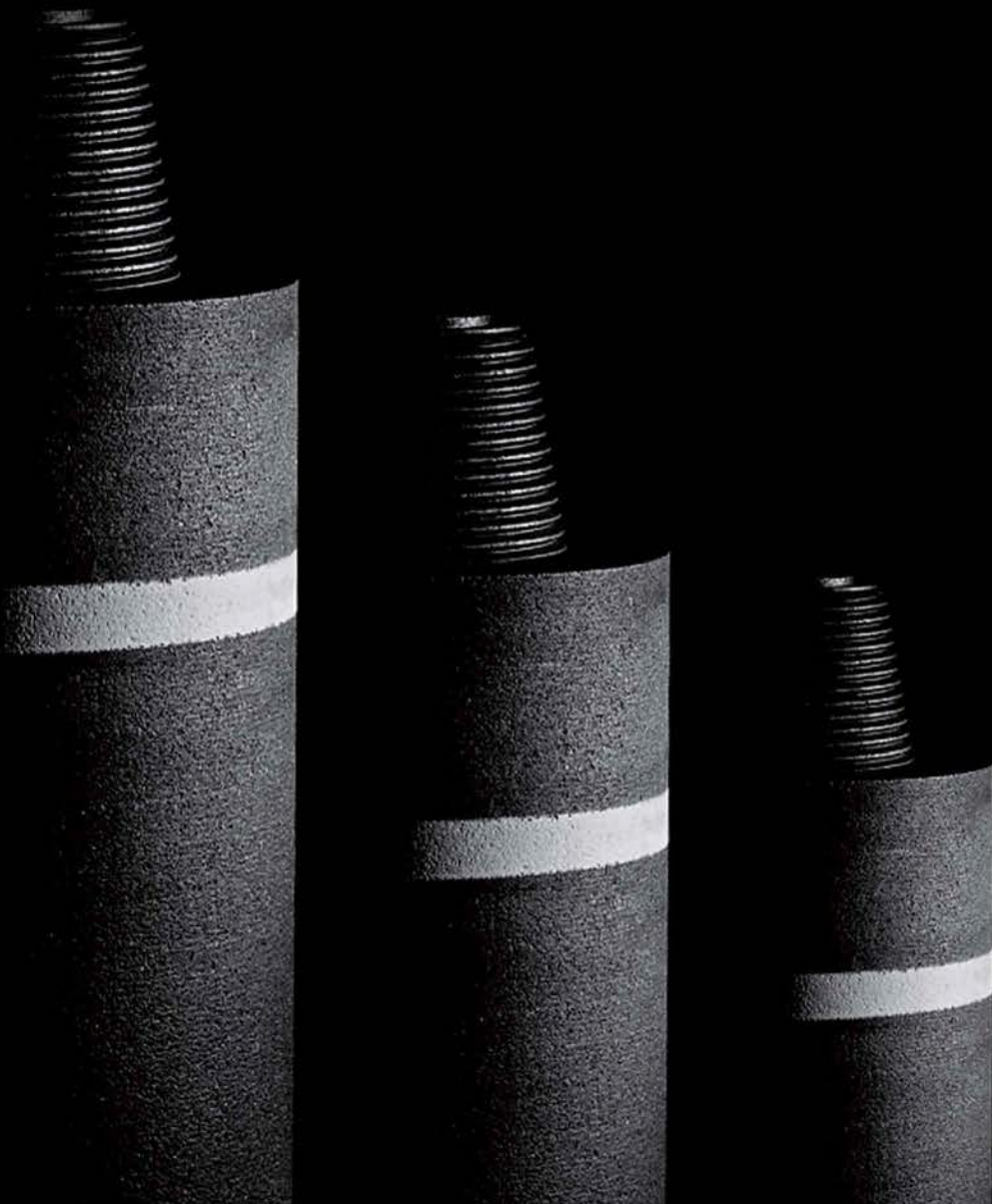


UK CARBON & GRAPHITE COMPANY LIMITED

DELIVERING QUALITY CARBON & GRAPHITE PRODUCTS TO THE GLOBE



SPECIALISING IN CARBON & GRAPHITE PRODUCTS



CONTENTS

INTRODUCTION	01
QUALITY & AWARDS	01
PRODUCTS	01
GRAPHITE ELECTRODES	02
CARBON ELECTRODES	09
SPECIALTY GRAPHITE	11
CARBON GOUGING RODS	15
CARBON / GRAPHITE ADDITIVES	17
CARBON / GRAPHITE SCRAP	19

INTRODUCTION

The UK Carbon & Graphite Company Limited (UKCG) is a UK based company specialising in the controlled manufacture, machining, testing and global distribution of carbon and graphite products utilised in varying applications and industrial sectors including;

- Aerospace
- Aluminium
- Carbon & Graphite (Production raw material supply)
- Foundry
- Fused Mineral
- Glass
- Steel

UKCG product manufacturing capabilities have been developed and extended through global partnerships and technical exchanges which have allowed the development of assured quality products proven to perform in the world's most demanding applications.

UKCG continue to focus and work with our customers and partners to develop new ideas and opportunities in the field of carbon and graphite.

QUALITY & AWARDS

UKCG product quality is backed by a responsive and professional service including full technical assistance to all customers; this has enabled us to establish ourselves as a quality provider to the globe. We are proud to be an approved supplier to some of the world's leading industrial companies.

In 2006 UKCG was certified by the British Standards Institution to ISO 9001. We are committed to continuous improvement within our company and we constantly develop and improve upon our Quality Management System to ensure we offer our customers significant cost savings whilst not sacrificing the quality or service on our full range of carbon and graphite products.

Our quality management system provides effective management of internal processes to meet international quality requirements. This ensures that as a company our quality is assured through systematically and proactively managing all areas of our work in progress. Through achieving these standards we can offer our customers a consistent approach in our delivery of all our products. ISO 9001 allows us to drive improvements in our own business and to deliver measurable results for our customers.

UKCG is proud to have received the 2011 Queens Award for Enterprise in the International Trade category, recognising the company's important growth and development in international markets.

PRODUCTS

UKCG products are manufactured using known and state of the art production equipment coupled with proven quality raw materials ensuring stable product quality time and again. Our products undergo some of the strictest supervision and testing during manufacture. Each and every one of our products undergoes numerous tests before being dispatched to our global customers.

GRAPHITE ELECTRODES

UKCG's range of top quality graphite electrodes are produced using some of the world's finest needle cokes and production techniques. This coupled with machining, testing, packing and distribution from our dedicated UK and global facilities, ensures our product and service remains consistent, cost effective and reliable.

UKCG graphite electrodes are produced according to exacting standards authorised and monitored by our personnel.

UKCG graphite electrodes are utilised by leading steel, foundry and fused mineral producers.

CHOOSING AN ELECTRODE

UKCG works with new and existing customers to select the most suitable product for their applications, always ensuring that quality and cost effectiveness are guaranteed.

General product selection guide;

UK-X1 Grade is recommended for use in ultra high power large capacity EAF and ultra high power large capacity LF applications.

UK-X2 Grade is recommended for use in ultra high power EAF and ultra high power LF applications.

UK-X3 Grade is recommended for use in high power LF, Foundry and Fused Mineral applications.

SPECIFICATIONS

PHYSICAL PROPERTIES

UK-X1 GRADE (PREMIUM)

ELECTRODE DIAMETER	MM	250 – 700
BULK DENSITY	G/CM ³	1.64 – 1.75
SPECIFIC RESISTANCE	$\mu\Omega\text{M}$	4.5 – 6.0
FLEXURAL STRENGTH	MPa	10 – 15
CTE	$10^{-6}/^{\circ}\text{C}$	0.3 – 1.5
POROSITY	%	17 – 23
ASH CONTENT	%	0.1 – 0.6

THE ABOVE DATA IS BASED ON TYPICAL VALUES AND NOT GUARANTEED.

UK-X2 GRADE (PREMIUM)

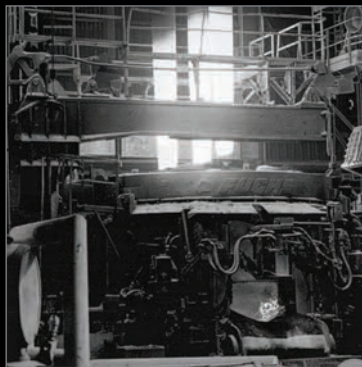
ELECTRODE DIAMETER	MM	200 – 600
BULK DENSITY	G/CM ³	1.64 – 1.72
SPECIFIC RESISTANCE	$\mu\Omega\text{M}$	5.0 – 6.5
FLEXURAL STRENGTH	MPa	9 – 14
CTE	$10^{-6}/^{\circ}\text{C}$	0.4 – 2.0
POROSITY	%	18 – 24
ASH CONTENT	%	0.1 – 0.6

THE ABOVE DATA IS BASED ON TYPICAL VALUES AND NOT GUARANTEED.

UK-X3 GRADE

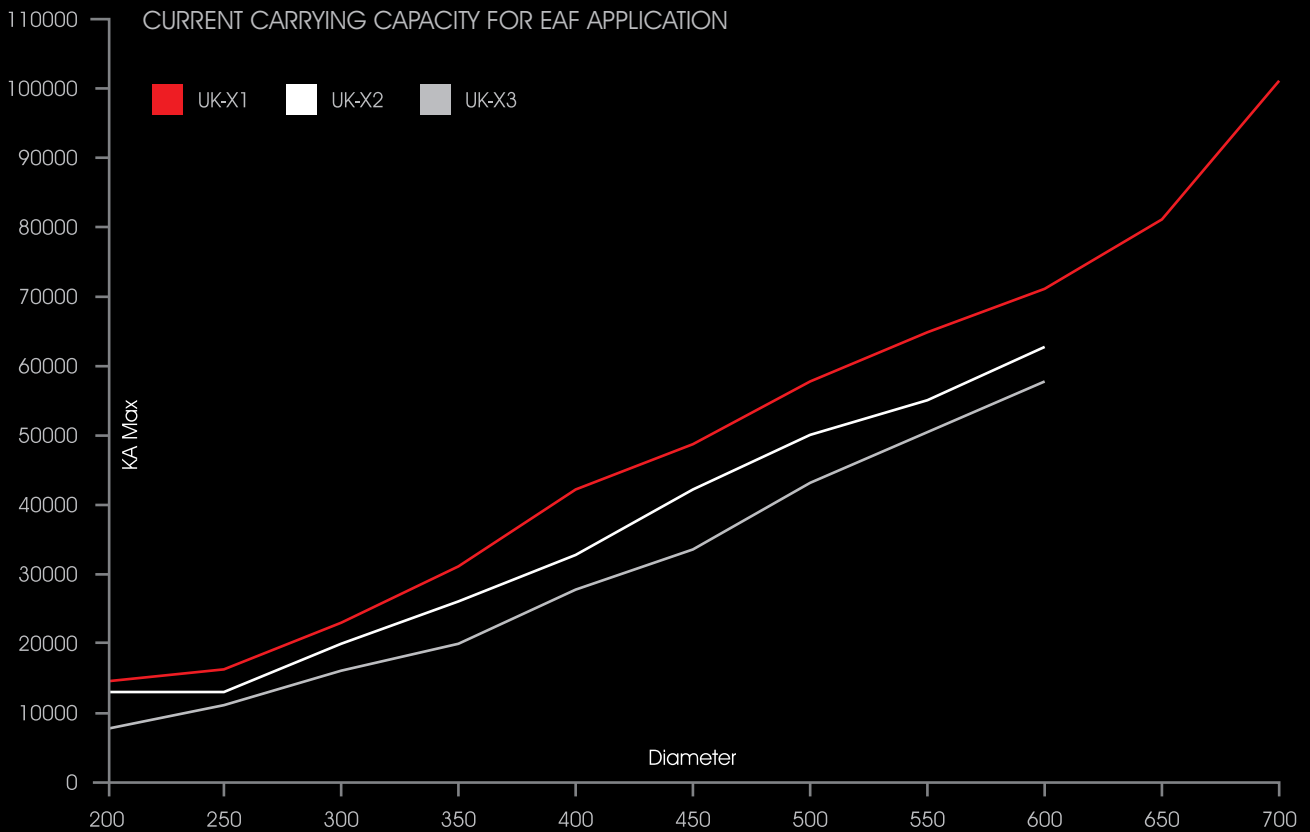
ELECTRODE DIAMETER	MM	75 – 600
BULK DENSITY	G/CM ³	1.60 – 1.72
SPECIFIC RESISTANCE	$\mu\Omega\text{M}$	5.5 – 7.5
FLEXURAL STRENGTH	MPa	8 – 13
CTE	$10^{-6}/^{\circ}\text{C}$	0.4 – 2.2
POROSITY	%	20 – 25
ASH CONTENT	%	0.1 – 0.6

THE ABOVE DATA IS BASED ON TYPICAL VALUES AND NOT GUARANTEED.



CURRENT CARRYING CAPACITY / CURRENT LOAD

NOMINAL DIAMETER	UK-X1	NOMINAL DIAMETER	UK-X2	NOMINAL DIAMETER	UK-X3
MM / INCH	CURRENT LOAD / A	MM / INCH	CURRENT LOAD / A	MM / INCH	CURRENT LOAD / A
250 (10")	9000 – 15500	200 (8")	5500 – 12500	75 (3")	1300 – 2000
300 (12")	15000 – 22000	250 (10")	8000 – 13500	100 (4")	1800 – 3000
350 (14")	20000 – 32000	300 (12")	14000 – 20000	130 (5")	2800 – 4200
400 (16")	25000 – 42000	350 (14")	18000 – 26000	150 (6")	4000 – 5000
450 (18")	32000 – 48000	400 (16")	23000 – 33000	200 (8")	4800 – 9000
500 (20")	38000 – 58000	450 (18")	27000 – 42000	250 (10")	8000 – 12000
550 (22")	46000 – 65000	500 (20")	32000 – 50000	300 (12")	11000 – 16000
600 (24")	52000 – 75000	550 (22")	35000 – 55000	350 (14")	15000 – 22000
650 (26")	59000 – 82000	600 (24")	37000 – 62000	400 (16")	20000 – 28000
700 (28")	67000 – 101000			450 (18")	24000 – 34000
				500 (20")	28000 – 44000
				550 (22")	34000 – 52000
				600 (24")	36000 – 58000



ELECTRODE DIAMETERS / LENGTHS

UKCG machine to meet International standards IEC / JIS and NEMA.

Our machining facilities and expertise allow us to offer our customers electrode machining to meet their specific demands. Whether an exact tolerance or an over size socket and connector system is needed, we can meet the demand.

NOMINAL DIAMETER (MM / INCH)	DIAMETER RANGE (MM / INCH)
75 (3")	73 – 78 (2.87") – (3.07")
100 (4")	98 – 103 (3.86") – (4.05")
130 (5")	127 – 132 (5.00") – (5.20")
150 (6")	149 – 154 (5.87") – (6.06")
175 (7")	174 – 179 (6.85") – (7.05")
200 (8")	200 – 205 (7.87") – (8.07")
225 (9")	225 – 230 (8.86") – (9.05")
250 (10")	251 – 256 (9.88") – (10.08")
300 (12")	302 – 307 (11.89") – (12.09")
350 (14")	352 – 358 (13.86") – (14.09")
400 (16")	403 – 409 (15.87") – (16.10")
450 (18")	454 – 460 (17.87") – (18.11")
500 (20")	505 – 511 (19.88") – (20.12")
550 (22")	556 – 562 (21.89") – (22.12")
600 (24")	607 – 613 (23.90") – (24.13")
650 (26")	657 – 663 (25.87") – (26.10")
700 (28")	708 – 714 (27.80") – (28.11")

ELECTRODE LENGTHS

NOMINAL DIAMETER (MM / INCH)	LENGTH RANGE (MM / INCH)
1000 (40")	925 – 1050 (36.42") – (41.34")
1200 (48")	1100 – 1250 (43.30") – (49.21")
1500 (60")	1400 – 1600 (55.12") – (62.99")
1800 (72")	1700 – 1900 (66.29") – (74.80")
2100 (84")	1975 – 2225 (77.75") – (87.59")
2400 (96")	2275 – 2525 (89.56") – (99.40")
2700 (110")	2550 – 2900 (100.39") – (114.17")

ELECTRODE CONNECTOR COMBINATIONS

4 TPI

NOMINAL ELECTRODE DIAMETER (MM / INCH)	IEC DESIGNATION CODE	MAJOR NIPPLE DIAMETER (MM / INCH)	LENGTH OF NIPPLE (MM / INCH)
75 (3")	45T4N	46.04 (1.81")	76.20 (3")
100 (4")	69T4N	69.85 (2.75")	101.60 (4")
130 (5")	79T4N	79.38 (3.12")	127.00 (5")
150 (6")	92T4N	92.08 (3.625")	139.70 (5.5")
175 (7")	107T4N	107.95 (4.25")	165.10 (6.5")
200 (8")	122T4N	122.24 (4.812")	177.80 (7")
225 (9")	139T4N	139.70 (5.5")	177.80 (7")
250 (10")	152T4N	152.40 (6")	190.50 (7.5")
300 (12")	177T4N	177.80 (7")	215.90 (8.5")
350 (14")	203T4N	203.20 (8")	254.00 (10")
	203T4L	203.20 (8")	304.80 (12")
400 (16")	222T4N	222.25 (8.75")	304.80 (12")
	222T4L	222.25 (8.75")	355.60 (14")
450 (18")	241T4N	241.30 (9.5")	355.60 (14")
	241T4L	241.30 (9.5")	355.60 (14")
	269T4L	269.88 (10.625")	457.20 (18")
500 (20")	269T4N	269.88 (10.625")	355.60 (14")
	269T4L	269.88 (10.625")	457.20 (18")
550 (22")	298T4N	298.45 (11.75")	355.60 (14")
	298T4L	298.45 (11.75")	457.20 (18")
600 (24")	317T4N	317.50 (12.5")	355.60 (14")
	317T4L	317.50 (12.5")	457.20 (18")
650 (26")	355T4N	355.60 (14")	457.2 (18")
	355T4L	355.60 (14")	558.8 (22")
700 (28")	374T4N	374.65 (14.75")	457.2 (18")
	374T4L	374.65 (14.75")	558.8 (22")

3 TPI

NOMINAL ELECTRODE DIAMETER (MM / INCH)	IEC DESIGNATION CODE	MAJOR NIPPLE DIAMETER (MM / INCH)	LENGTH OF NIPPLE (MM / INCH)
225 (9")	139T3N	139.70 (5.5")	203.20 (8")
250 (10")	155T3N	155.57 (6.124")	220.00 (8.661")
300 (12")	177T3N	177.16 (6.97")	270.90 (10.665")
350/400 (14"/16)	215T3N 215T3L	215.90 (8.5") 215.90 (8.5")	304.80 (12") 355.60 (14")
400/450 (16"/18")	241T3N 241T3L	241.30 (9.5") 241.30 (9.5")	338.70 (13.334") 355.60 (14")
500 (20")	273T3N 273T3L	273.05 (10.75") 273.05 (10.75")	355.60 (14") 457.20 (18")
550 (22")	298T3N 298T3L	298.45 (11.75") 298.45 (11.75")	372.50 (14.66") 457.20 (18")

- UKCG NIPPLES / CONNECTORS CAN BE SUPPLIED PITCH PLUGGED.
- UKCG ELECTRODES / CONNECTORS CAN BE SUPPLIED PRE-SET.

RECOMMENDED TORQUE LEVELS

ELECTRODE DIAMETER (MM / INCH)	TORQUE (NM)	TORQUE (FT.LBS)	TORQUE (KG-M)
200 (8")	250	180	25
225 (9")	350	260	35
250 (10")	450	330	45
300 (12")	650	480	65
350 (14")	850	630	90
400 (16")	1100	810	110
450 (18")	1500	1100	150
500 (20")	2500	1850	250
550 (22")	3500	2570	350
600 (24")	4000	2940	400
650 (26")	5000	3680	500
700 (28")	6000	4410	600

ELECTRODE PACKAGING GUIDE

Product Packaging

All UKCG products are packed in a manner which ensures complete customer satisfaction. Our packaging is designed to withstand the necessary handling, movement and storage involved in getting our electrodes to our varied customer locations around the globe.

Should you have a specific packaging requirement we can of course endeavour to cater for your requirements but our standard and proven packaging formats are as follows;

Export Packaging

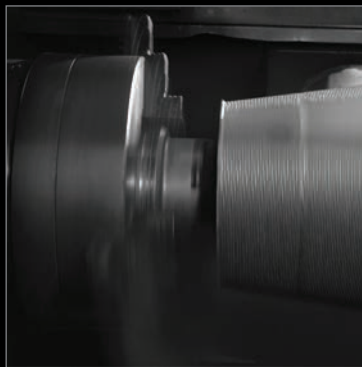
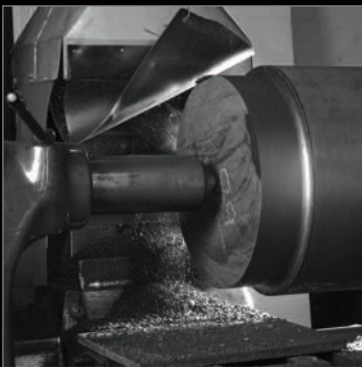
- Electrodes are protected at both nipple and exposed socket end.
- Electrodes are steel banded to bearers.
- Electrodes are wood crated and steel banded.

European and North American Packaging

- Electrodes are protected at both nipple and exposed socket end.
- Electrodes are steel banded to bearers.

GRAPHITE ELECTRODE RE-MACHINING

UKCG can offer a full graphite electrode re-generation package. UKCG can salvage suitable electrodes broken on furnace and either machine these down for ladle use or socket for re-use on the EAF. Further UKCG can supply a comprehensive range of UHP nipples to accompany electrodes that have been reconditioned on behalf of our customers.



CARBON ELECTRODES

UKCG carbon electrodes are produced according to exacting standards authorised and monitored by our personnel.

UKCG supply a full range of carbon electrodes ranging in diameter from 500mm (20") to 1400mm (55") which are used in varying customer applications including ferroalloy and silicon production.

UK-XC1 GRADE

ELECTRODE DIAMETER	MM	500 – 700	750 – 950	1000 - 1400
BULK DENSITY	G/CM ³	1.56 – 1.65	1.56 – 1.65	1.56 – 1.65
SPECIFIC RESISTANCE	μΩM	< 35	< 35	< 35
FLEXURAL STRENGTH	MPa	4 – 7.5	4 – 7.5	3.5 - 7
CTE	10 ⁻⁶ /°C	3.8 – 5	3.7 – 4.9	3.7 – 4.9
ASH CONTENT	%	< 2.5	< 2.5	< 2.5

THE ABOVE DATA IS BASED ON TYPICAL VALUES AND NOT GUARANTEED.

UK-XC2 GRADE

ELECTRODE DIAMETER	MM	500 – 700	750 – 950	1000 - 1400
BULK DENSITY	G/CM ³	1.56 – 1.65	1.56 – 1.65	1.56 – 1.65
SPECIFIC RESISTANCE	μΩM	< 40	< 40	< 40
FLEXURAL STRENGTH	MPa	4 – 7.5	4 – 7.5	3.5 - 7
CTE	10 ⁻⁶ /°C	3.8 – 5	3.7 – 4.9	3.7 – 4.9
ASH CONTENT	%	< 2.5	< 2.5	< 2.5

THE ABOVE DATA IS BASED ON TYPICAL VALUES AND NOT GUARANTEED.

CONNECTOR COMBINATIONS

UKCG can offer Male / Female and Nipple / Socket connection options on most of our carbon electrodes.

Should you have a specific requirement or require guidance please contact us to discuss and we shall do our best to meet your demand.

Product Packing

All UKCG products are packed in a manner which ensures complete customer satisfaction. Our packaging is designed to withstand the necessary handling, movement and storage involved in getting our electrodes to our varied customer locations around the globe.

Should you have a specific packaging requirement we can of course endeavour to cater for your requirements but our standard and proven packaging formats are as follows;

Export Packaging

- Electrodes are protected at both nipple and exposed socket end.
- Electrodes are steel banded to bearers.
- Electrodes are wood crated and steel banded.

European and North American Packaging

- Electrodes are protected at both nipple and exposed socket end.
- Electrodes are steel banded to bearers.

SPECIALTY GRAPHITE

UKCG produce specialty graphite products using some of the world's finest raw materials and production techniques. This coupled with machining, testing, packing and distribution from our dedicated UK and global facilities, ensures our product and service remains consistent, cost effective and reliable.

UKCG specialty graphite products are produced according to exacting standards authorised and monitored by our personnel. UKCG supply some of the world's leading graphite component manufacturers with a high quality range of blocks / rounds and shapes.

UKCG can supply bulk graphite products to carbon/graphite producers and fully machined components for end application customers.

EXTRUDED GRAPHITE

UKEG Series graphite offers a product with good electrical, mechanical and thermal properties, typically utilised in the following applications;

- Melting / Sintering Moulds (Hot Metal)
- Heaters
- Heat Shields
- Vacuum Furnace
- Other

PHYSICAL SPECIFICATIONS

GRADE	GRAIN SIZE (MM)	BULK DENSITY (G/CM3) (MIN)	RESISTIVITY ($\mu\Omega\cdot m$) (MAX)	FLEXURAL STRENGTH (MPA) (MIN)	COMPRESSIVE STRENGTH (MPA) (MIN)	ASH (%) (MAX)
UKEG1	0.8	1.78	7	19	47	0.3
UKEG2	0.8	1.72	8	18	45	0.3
UKEG3	2.0	1.72	8	17	44	0.3
UKEG4	0.8	1.60	8	12	32	0.3
UKEG5	2.0	1.60	8.5	11	30	0.3

PLEASE NOTE: OTHER PRODUCTS CAN BE PRODUCED TO ORDER, PLEASE CONTACT US FOR FURTHER INFO.

ROD DIMENSIONS

DIAMETER (MM / INCH)	LENGTH (MM)	LENGTH (INCH)
75 (3")	1000/1200/1500	40/48/60
100 (4")	1000/1200/1500/1800	40/48/60/72
150 (6")	1000/1200/1500/1800	40/48/60/72
200 (8")	1000/1200/1500/1800	40/48/60/72
300 (12")	1000/1200/1500/1800	40/48/60/72
350 (14")	1500/1800/2000	60/72/80
400 (16")	1500/1800/2000	60/72/80
450 (18")	1800/2000	72/80
500 (20")	1800/2000	72/80

VIBRATED GRAPHITE

UKVG Series graphite offers a product with excellent properties typically utilised in the following applications;

- Chemical
- Electrical
- Metallurgical

ROUNDS

PHYSICAL SPECIFICATIONS

GRADE	GRAIN SIZE (MM)	BULK DENSITY (G/CM ³) (MIN)	RESISTIVITY ($\mu\Omega\cdot m$) (MAX)	FLEXURAL STRENGTH (MPA) (MIN)	COMPRESSIVE STRENGTH (MPA) (MIN)	C.T.E ($\times 10^{-6}/^{\circ}C$) (MAX)	ASH (%) (MAX)
UKVG1	0.8	1.72	8.5	13.5	30	2.5	0.3
UKVG2	0.8	2.0	8.5	13	28	2.5	0.3
UKVG3	2.0	2.0	9	7.9	21	2.5	0.3
UKVG4	0.8	4	10	7.5	20	2.5	0.3

PLEASE NOTE: OTHER PRODUCTS CAN BE PRODUCED TO ORDER, PLEASE CONTACT US FOR FURTHER INFO.

ROUND DIMENSIONS

DIAMETER (MM / INCH)	LENGTH (MM / INCH)
560 (22")	420 (16.5")
650 (26")	400 (16")
660 (26")	630 (25")
720 (28")	630 (25")
765 (30")	525 (20")
820 (32")	630 (24")
850 (33.5")	400 (16")
1105 (43.5")	584 (23")
1100 (43.5")	525 (22")
1120 (44")	400 (16")
1120 (44")	584 (23")
1232 (48.5")	584 (23")
1245 (49")	380 (15")
1270 (50")	380 (15")

BLOCKS

PHYSICAL SPECIFICATIONS

GRADE	GRAIN SIZE (MM)	BULK DENSITY (G/CM ³) (MIN)	RESISTIVITY ($\mu\Omega\cdot m$) (MAX)	FLEXURAL STRENGTH (MPA) (MIN)	COMPRESSIVE STRENGTH (MPA) (MIN)	C.T.E ($\times 10^{-6}/^{\circ}C$) (MAX)	ASH (%) (MAX)
UKVG1	0.8	1.72	8.5	13.5	30	2.5	0.3
UKVG2	2.0	1.71	8.5	13.0	28	2.5	0.3
UKVG3	2.0	1.60	9	7.9	21	2.3	0.3
UKVG4	4	1.58	10	7.5	20	2.3	0.3

PLEASE NOTE: OTHER PRODUCTS CAN BE PRODUCED TO ORDER, PLEASE CONTACT US FOR FURTHER INFO.

BLOCK DIMENSIONS

WIDTH (MM / INCH)	HEIGHT (MM / INCH)	LENGTH (MM / INCH)
400 (16")	400 (16")	1700 – 2000 (68" – 80")
500 (20")	500 (20")	1800 – 2000 (72" – 80")
550 (22")	550 (22")	1800 – 2000 (72" – 80")

ISOSTATIC GRAPHITE

UKIG Series graphite offers a product with high density, strength and purity combined with good electrical properties typically utilised in the following applications;

- Aerospace Parts
- Composite Tooling
- Continuous Casting Dies
- Graphite Moulds
- Semi-conductors
- EDM
- Precious Metals

PHYSICAL SPECIFICATIONS

GRADE	GRAIN SIZE (μm)	BULK DENSITY (G/CM ³) (MIN)	RESISTIVITY ($\mu\Omega\cdot m$) (MAX)	FLEXURAL STRENGTH (MPA) (MIN)	COMPRESSIVE STRENGTH (MPA) (MIN)	C.T.E ($\times 10^{-6}/^{\circ}C$) (MAX)	SHORE HARDNESS (MIN)	ASH (%) (MAX)
UKIG1	40	1.84	≤ 13	39	75	3.7	50	500 – 1000
UKIG2	25	1.85	≤ 13	40	80	4.5	55	500 – 1000
UKIG3	25	1.80	≤ 13	37	75	4.4	50	500 – 1000
UKIG4	25	1.75	≤ 15	25	55	4.0	50	500 – 1000
UKIG5	25	1.70	≤ 15	25	45	3.8	45	500 – 1000

PLEASE NOTE: OTHER PRODUCTS CAN BE PRODUCED TO ORDER, PLEASE CONTACT US FOR FURTHER INFO.

ROUND DIMENSIONS

DIAMETER (MM / INCH)	LENGTH (MM / INCH)
400 (16")	450 (18")
450 (18")	450 (18")
480 (19")	450 (18")
520 (20")	350 (14")
520 (20")	600 (24")
560 (22")	430 (17")
590 (23")	600 (24")
650 (26")	640 (25")
700 (28")	640 (25")

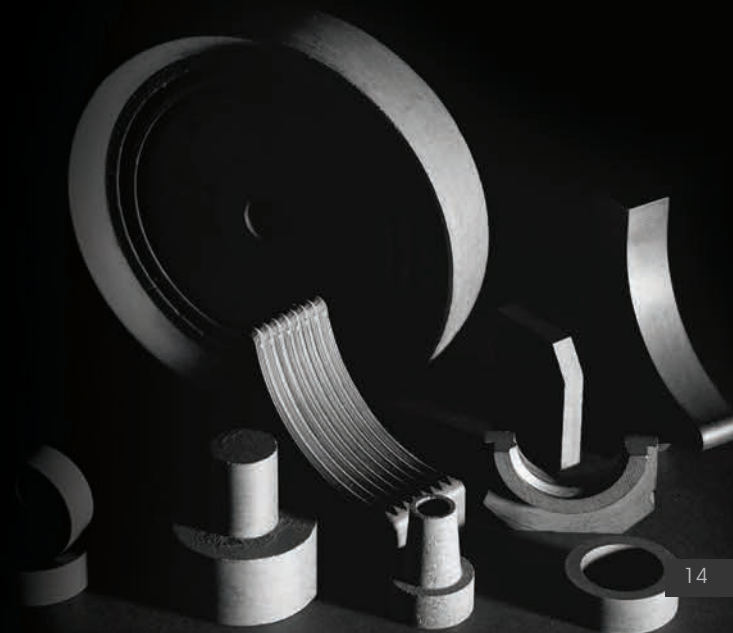
BLOCK DIMENSIONS

WIDTH (MM / INCH)	HEIGHT (MM / INCH)	LENGTH (MM / INCH)
400 (16")	400 (16")	400 (16")
400 (16")	400 (16")	500 (20")
400 (16")	400 (16")	600 (24")
1000 (40")	500 (20")	300 (12")
1200 (48")	600 (24")	600 (24")

Product Packing

All UKCG products are packed in a manner which ensures complete customer satisfaction. Our packaging is designed to withstand the necessary handling, movement and storage involved in getting our carbon and graphite products to our varied customer locations around the globe.

Should you have a specific packaging requirement we can of course endeavour to cater for your requirements.



CARBON GOUGING RODS

UKCG offer a full range of Carbon Gouging Rods suitable for all industrial applications.

UKCG's full Gouging Rod product range is produced according to proven design, makeup and under ISO 9001 accredited manufacturing procedures.

COPPER COATED - POINTED CARBON GOUGING ROD (D.C)

Applications; cutting, removal of welding defects, making holes, welding inspection and removing over-welded parts.

PRODUCT CODE	DIMENSIONS (MM)	CURRENT RANGE (AMPS)
UK-PGR3.2	3.2×305/355	130 – 180
UK-PGR4	4×305/355	150 – 200
UK-PGR5	5×305/355	200 – 250
UK-PGR6	6×305/355	300 – 350
UK-PGR6.5	6.5×305/355	320 – 370
UK-PGR7	7×305/355	350 – 400
UK-PGR8	8×305/355/455/510	400 – 450
UK-PGR9	9×305/355/455/510	450 – 500
UK-PGR10	10×305/355/455/510	500 – 550
UK-PGR11	11×305/355/455/510	600 – 650
UK-PGR12	12×305/355/455/510	750 – 850
UK-PGR13	13×305/355/455/510	800 – 1000
UK-PGR16	16×305/355/455/510	1000 – 1200
UK-PGR19	19×305/355/455/510	1200 – 1400
UK-PGR25	25×305/355/455/510	1400 – 1600

FLAT CARBON GOUGING RODS (D.C)

Applications; close tolerance metal removal and scarfing to produce a rectangular groove.

PRODUCT CODE	DIA × LENGTH (MM)	CURRENT RANGE (AMPS)
UK-FGR3.25	3×25×355	300 – 350
UK-FGR4.12	4×12×355	200 – 250
UK-FGR5.10	5×10×355	250 – 300
UK-FGR5.12	5×12×355	300 – 350
UK-FGR5.15	5×15×355/305	350 – 400
UK-FGR5.18	5×18×355	400 – 450
UK-FGR5.20	5×20×355	450 – 500
UK-FGR5.25	5×25×355	500 – 550
UK-FGR6.20	6×20×355	550 – 600

BLASTING CARBON GOUGING ROD (D.C)

Applications; cutting, removal of welding defects and mold pits, producing mold hole. Product increases welding speed without damaging the material.

PRODUCT CODE	DIMENSIONS (MM)	CURRENT RANGE (AMPS)
UK-PGR3.2	3.2×305/355	130 – 180
UK-PGR4	4×305/355	150 – 200
UK-PGR5	5×305/355	200 – 250
UK-PGR6	6×305/355	300 – 350
UK-PGR6.5	6.5×305/355	320 – 370
UK-PGR7	7×305/355	350 – 400
UK-PGR8	8×305/355/455/510	400 – 450
UK-PGR9	9×305/355/455/510	450 – 500
UK-PGR10	10×305/355/455/510	500 – 550
UK-PGR11	11×305/355/455/510	600 – 650
UK-PGR12	12×305/355/455/510	750 – 850
UK-PGR13	13×305/355/455/510	800 – 1000
UK-PGR16	16×305/355/455/510	1000 – 1200
UK-PGR19	19×305/355/455/510	1200 – 1400
UK-PGR25	25×305/355/455/510	1400 – 1600

JOINTED CARBON GOUGING ROD (D.C)

Applications; can be used manually or with torches.

PRODUCT CODE	DIMENSIONS (MM)	CURRENT RANGE (AMPS)
UK-JGR6.5	6.5 × 355	450 – 500
UK-JGR8	8 × 355/430	500 – 550
UK-JGR9	9 × 355/430	550 – 600
UK-JGR10	10 × 355/430/455/510	600 – 650
UK-JGR11	11 × 355/430/455/510	650 – 700
UK-JGR12	12 × 355/430/455/510	700 – 800
UK-JGR13	13 × 355/430/455/510	450 – 500
UK-JGR16	16 × 355/430/455/510	800 – 1000
UK-JGR19	19 × 355/430/455/510	1000 – 1200
UK-JGR25	25 × 355/430/455/510	1400 – 1600

PLEASE NOTE: OTHER PRODUCTS CAN BE PRODUCED TO ORDER, PLEASE CONTACT US FOR FURTHER INFO.

Product Packing

All UKCG products are packed in a manner which ensures complete customer satisfaction. Our packaging is designed to withstand the necessary handling, movement and storage involved in getting our carbon and graphite products to our varied customer locations around the globe.

Should you have a specific packaging requirement we can of course endeavour to cater for your requirements.

CARBON / GRAPHITE ADDITIVES

UKCG carbon and graphite based additives are produced according to exacting standards authorised and monitored by our personnel.

UKCG supply a varied range of high carbon content powders and particles for use predominantly by steel makers and carbon and graphite product manufacturers.

GRAPHITE PARTICLE / UK-RC-GP

PRODUCT GRADE	UK-RC-GP
FIXED CARBON (%)	99
SULPHUR (%)	0.03
VOLATILE MASS (%)	0.5
ASH (%)	0.5

GRAPHITISED PETROLEUM COKE / UK-RC-GPC

PRODUCT GRADE	UK-RC-GPC1
FIXED CARBON (%)	98.5
SULPHUR (%)	0.05
VOLATILE MASS (%)	0.5
ASH (%)	0.5

CALCINED PETROLEUM COKE / UK-RC-CPC

PRODUCT GRADE	UK-RC-CPC1	UK-RC-CPC2	UK-RC-CPC2
FIXED CARBON (%)	98.5	98	98
SULPHUR (%)	0.5	0.5	2.5
VOLATILE MASS (%)	0.5	0.7	0.7
ASH (%)	0.5	0.7	0.7

CALCINED ANTHRACITE

PRODUCT GRADE	UK-RC-CPC1	UK-RC-CA2	UK-RC-CA3	UK-RC-CA3	UK-RC-CA3
FIXED CARBON (%)	90	92	93	94	95
SULPHUR (%)	0.5	0.5	0.5	0.5	0.5
VOLATILE MASS (%)	1.5	1.5	1.5	1.0	1.0
ASH (%)	8	7	6	5	4

Product Packing

All UKCG products are packed in a manner which ensures complete customer satisfaction. Our packaging is designed to withstand the necessary handling, movement and storage involved in getting our carbon and graphite products to our varied customer locations around the globe.

Should you have a specific packaging requirement we can of course endeavour to cater for your requirements.



CARBON / GRAPHITE SCRAP

SYNTHETIC GRAPHITE SCRAP

UKCG operate a network for the collection and controlled cleaning of graphite electrode and specialty graphite scrap allowing us to offer guaranteed quality graphite scrap from around the world.

UKCG Carbon/Graphite scrap products are typically supplied to other Carbon/Graphite producers for re-processing and new product production uses.

GRAPHITE PARTICLE / UK-RC-GP

PRODUCT GRADE	UK-RC-GP
FIXED CARBON (%)	98 – 99
SULPHUR (%)	0.04 – 0.05
VOLATILE MASS (%)	0.5 – 1.0
ASH (%)	0.4 – 1.0

CATHODE SCRAP

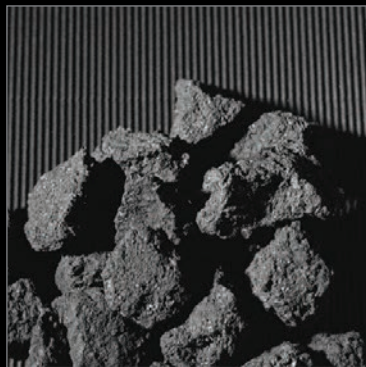
UKCG can offer Cathode scraps in the form of blocks and lumps based on Cathode made from 80% ECA and 20% Synthetic Graphite.

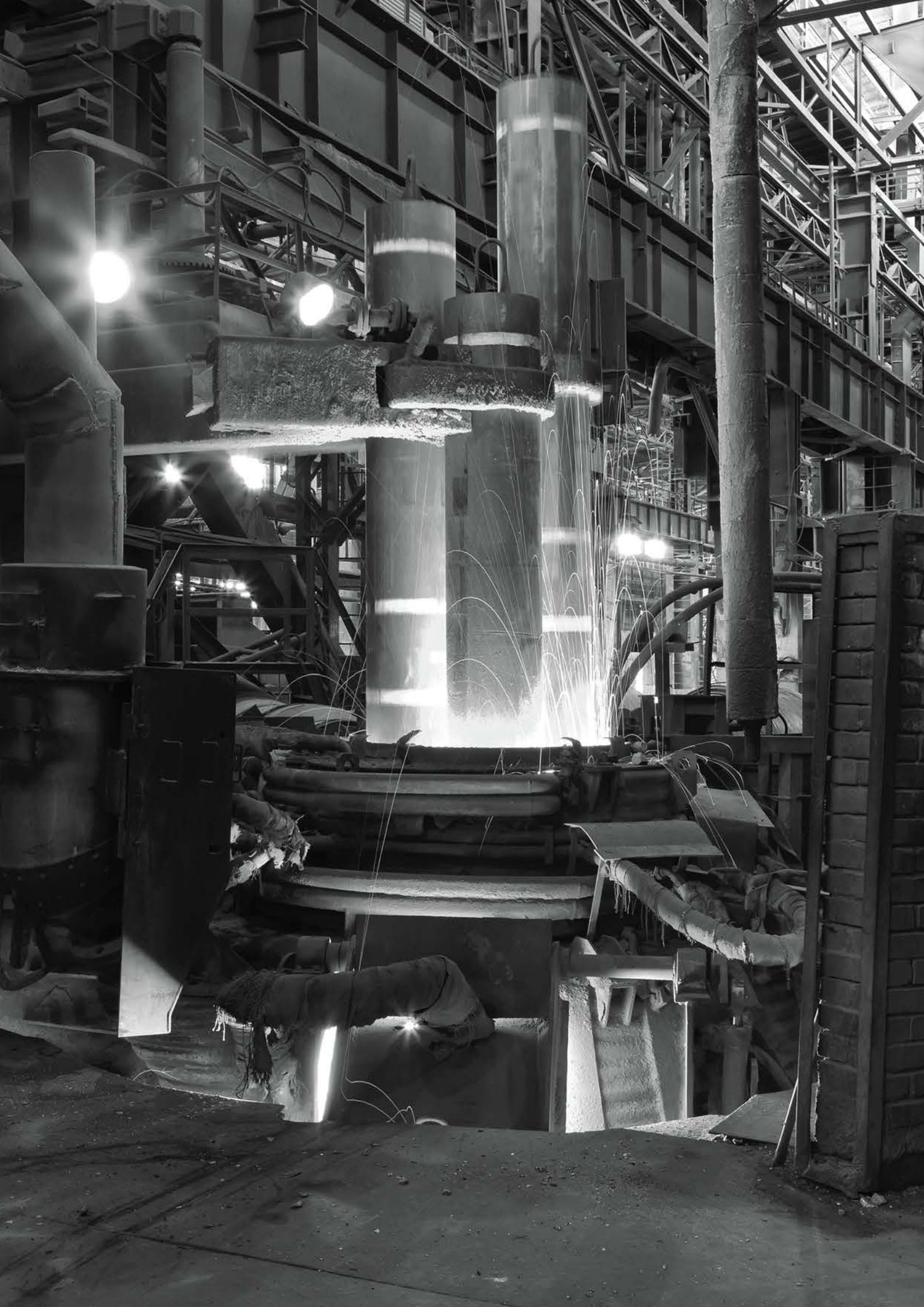
Please enquire for specifications and further information.

Product Packing

All UKCG products are packed in a manner which ensures complete customer satisfaction. Our packaging is designed to withstand the necessary handling, movement and storage involved in getting our carbon and graphite products to our varied customer locations around the globe.

Should you have a specific packaging requirement we can of course endeavour to cater for your requirements.







UKCG HEAD OFFICE

UKCG House, 5 Strutt Street, Belper, Derbyshire, DE56 1UN, UK
Tel: +44 (0) 1773 881130 // Fax: +44 (0) 1773 881138
Email: enquiries@uk-cg.com // Web: www.uk-cg.com

UKCG PRODUCTION – Facility 1

Harrison Street, Meadowbank Industrial Estate, Rotherham, S61 1EE, UK
Email: production@uk-cg.com

UKCG PRODUCTION – Facility 2

Coke Lane, Rotherham, S60 2JS, UK
Email: production@uk-cg.com



ISO 9001
CERTIFICATE NUMBER
FS 502322



THE QUEEN'S AWARDS
FOR ENTERPRISE-
INTERNATIONAL TRADE
2011